



GOOD MORNING  
Have Good Trading Day

FRIDAY



Price is what you pay.  
Value is what you get.

- Warren Buffet



## MARKET PULSE

### INDIAN INDICES

NAME	CMP	NET CH.	%
SENSEX	27859	+84	+0.31
NIFTY	8592	+16	+0.20

### INDIAN ADR'S

SYMBOL	CLOSE	GAIN/ LOSS %
DRREDDY	44.82	+0.41
HDFCBANK	69.45	+0.88
ICICIBK	7.23	+0.06
INFY	16.43	-0.08
TATAMOTOR	38.18	+0.43
WIPRO	11.33	+0.07

### FII AND MF ACTIVITY

SYMBOL	In Crs.
FIIs Eq (Provisional)	608.35
FIIs Index Future	6.39
FIIs Index Options	517.04
FIIs Stock Future	-956.69
FIIs Stock Options	-30.61
DII's Eq (Provisional)	-621.65

### CURRENCY

RBI RATE	11-AUG-2016
RUPEE - \$	66.8571
EURO	74.6526
YEN 100	65.9100
GBP	86.9543

## MARKET PULSE

### GLOBAL INDICES

NAME	CMP	NET CH.	%
DOW	18613	+117	+0.64
NASDAQ	5228	+23	+0.46
NIKKEI	16856	+121	+0.72
HANG SENG	22766	+185	+0.82
SGX NIFTY	8632	+15	+0.18

### WORLD COMMODITIES

FUTURE	U\$\$	CHANGES
CRUDE	43.72	+0.23
NATURAL GAS	2.531	-0.020
GOLD	1345.30	-4.7
SILVER	20.005	-0.015
COPPER	2.1830	-0.0080

### WORLD EVENTS

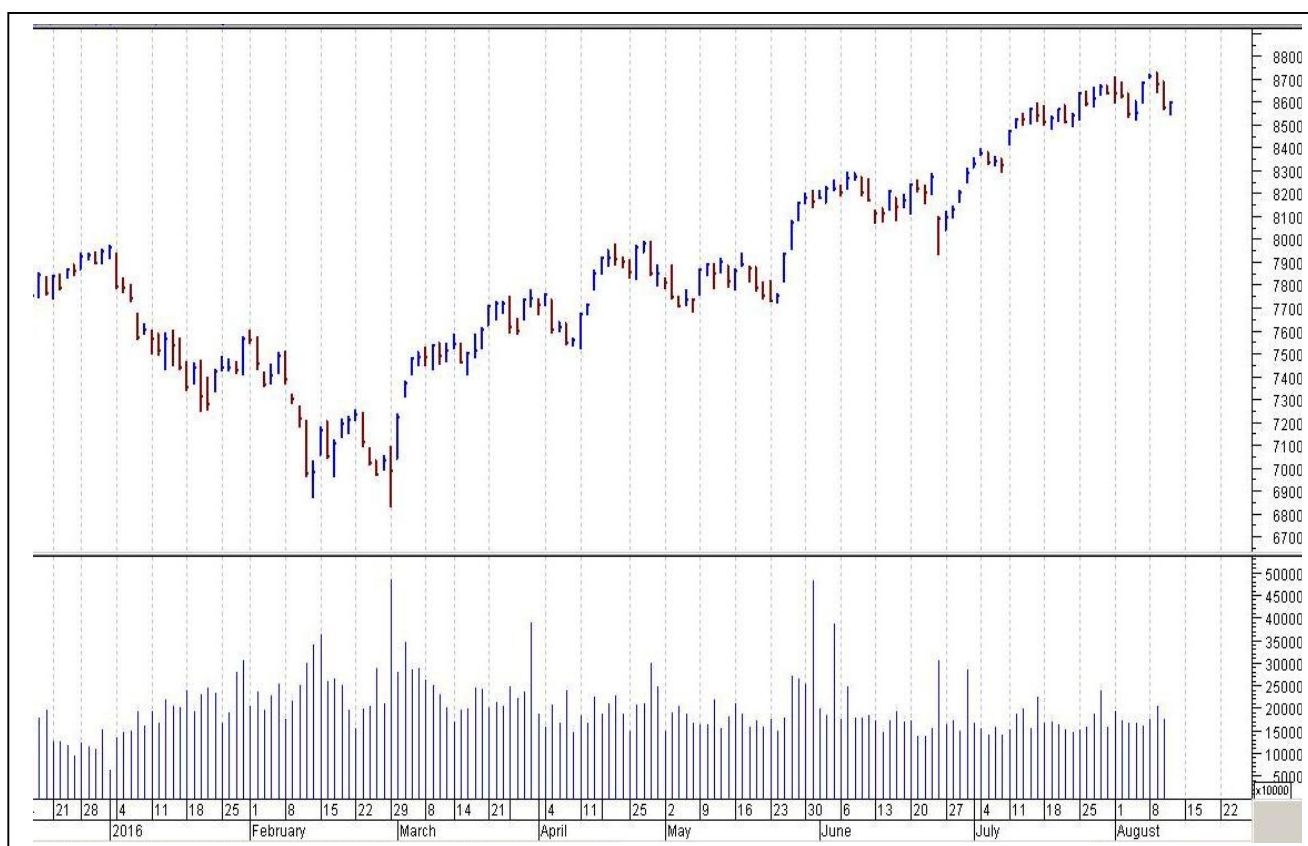
- US: Core Retail Sales m/m
- PPI m/m
- Retail Sales m/m
- Prelim UoM Consumer Sentiment
- UK:Construction Output m/m
- CB Leading Index m/m

## TOP STORY

- AB Nuvo Board Approves Composite Scheme Of Agmt Between Co, AB Fin & Grasim. For 100 Shares Of Nuvo, Shareholders Will Get 30 Shares Of Grasim For 100 Shares Of Nuvo, Shareholders Will Get 210 Shares In ABFSL
- Alkem Labs USFDA Gives Nod To Co's Bioequivalence Facility At Taloja, Maharashtra
- Patanjali Gets MP & Maharashtra Govt Orders To Set Up Units/Food Park
- Gitanjali Gems To Raise Funds Up To `110 Cr By Issue Of Convertible Warrants
- Grasim Q1 Standalone Net Profit At `320.9 Cr Vs `134.5 Cr (YoY) Standalone Total Income Up 24.6% At `2,426.5 Cr Vs `1,947 Cr (YoY)
- AB Nuvo Q1 Cons Net Profit Down 56.8% At `305.1 Cr Vs `706.2 Cr (YoY) Total Income Up 0.2% At `3,194 Cr Vs `3,188 Cr (YoY)
- JK Lakshmi Cement Q1 Net Profit At `28.6 Cr Vs Loss Of `23.5 Cr (YoY)



## NIFTY CHART



## MARKET COMMENTARY

Thursday's session of trade was characterized by volatility, with benchmarks oscillating between green and red due to profit-booking by funds and retail investors amid weak global cues. Market sentiment was also influenced by investors trading cautiously ahead of June IIP and retail inflation data for July scheduled to be released on Friday. Indian equity benchmarks which traded mostly in red in early deals added some strength hovering near the highest point in late noon deals before paring entire gains and finally ended in green. For today's trade Nifty likely to trade in the range between 8615 – 8635 in the upper side and 8575 – 8565 in the lower side.

### MARKET LEVELS

	CMP	SUPPORT LEVELS				RESISTANCE LEVELS			
NIFTY	8592	8575	8565	8545	8525	8615	8635	8655	8685
USDINR	66.97	66.9	66.8	66.7	66.6	67.1	67.2	67.3	67.4





#### BULK DEALS (BSE)

SCRIP	CLIENT NAME	BUY/SELL	QUANTITY	PRICE
DBL	EAST BRIDGE CAPITAL MASTER FUND LIMITED	B	924,292	242.92
RATNAMANI	SAIF INDIA V FII HOLDINGS LIMITED	B	559,144	539.96
RATNAMANI	DARSHANA RAJEN SHAH	S	300,000	540
RATNAMANI	BABULAL M BHANSALI	S	500,000	540.11

#### BULK DEALS (NSE)

SCRIP	CLIENT NAME	BUY/SELL	QUANTITY	PRICE
DBL	EAST BRIDGE CAPITAL MASTER FUND LIMITED	BUY	1167883	242.17
DBL	SWISS FINANCE CORPORATION (MAURITIUS) LIMITED	BUY	730000	250.04
HEROMOTOCO	BAHADUR CHAND INVESTMENTS PVT LTD	BUY	4880988	3319
HEROMOTOCO	BRIJ MOHAN LAL OM PARKASH	SELL	5754744	3319
RADICO	CITIGROUP GLOBAL MARKETS MAURITIUS PRIVATE LTD	BUY	4000000	92

#### SCRIP'S IN F&O BAN

(To resume for normal trading below 80% of market wide limit required)

DISHTV, IBREALEST, INDIACEM, JETAIRWAYS, JINDALSTEL, JISLJALEQS, RCOM, WOOCKPHARMA

#### Initial Public Offering (IPO)

Company Name	Security type	Issue Start Date	Issue End Date	Status
RBL Bank Ltd	Equity	19-Aug-2016	23-Aug-2016	Upcoming



### NIFTY 50 STOCKS: SUPPORT & RESISTANCE

Symbol	Close	Support 1	Support 2	Pivot Point	Resistance1	Resistance2
ACC	1618.40	1590.67	1562.43	1639.33	1667.57	1716.23
ADANI PORTS	253.50	247.98	237.52	254.62	265.08	271.72
AMBUJACEM	259.70	255.90	251.35	263.55	268.10	275.75
AXISBANK	569.75	562.17	556.43	568.73	574.47	581.03
ASIANPAINT	1145.10	1122.55	1115.15	1135.50	1142.90	1155.85
BAJAJ-AUTO	2846.35	2833.43	2810.87	2867.72	2890.28	2924.57
BANKBARODA	145.95	156.75	153.10	159.00	162.65	164.90
BHARTIARTL	346.35	343.17	339.88	348.28	351.57	356.68
BHEL	136.40	134.55	132.75	137.80	139.60	142.85
BOSCH LTD	24781.05	24781.05	24540.10	25225.95	25466.90	25911.80
BPCL	596.85	573.13	562.72	588.82	599.23	614.92
CAIRN	190.10	188.30	184.90	191.70	195.10	198.50
CIPLA	523.95	515.85	510.45	524.90	530.30	539.35
COALINDIA	337.80	334.97	331.98	337.48	340.47	342.98
DRREDDY	3010.85	2981.10	2962.55	3006.55	3025.10	3050.55
GAIL	370.90	371.47	368.98	374.98	377.47	380.98
GRASIM	4539.60	4699.40	4555.30	4949.70	5093.80	5344.10
HCLTECH	824.55	809.13	800.12	814.57	823.58	829.02
HDFC	1348.45	1325.33	1313.52	1337.17	1348.98	1360.82
HDFCBANK	1228.25	1214.12	1201.33	1232.53	1245.32	1263.73
HEROMOTOCO	3304.85	3263.32	3209.33	3351.08	3405.07	3492.83
HINDALCO	142.25	143.85	141.90	146.50	148.45	151.10
HINDUNILVR	935.65	920.05	915.15	927.70	932.60	940.25
ICICIBANK	242.70	236.15	232.95	241.35	244.55	249.75
IDEA	95.45	90.97	88.98	94.48	96.47	99.98
INDUSINDBK	1164.45	1144.07	1130.03	1167.03	1181.07	1204.03
INFY	1077.35	1075.73	1069.12	1081.82	1088.43	1094.52
ITC	251.65	245.40	244.30	246.90	248.00	249.50
KOTAKBANK	764.65	756.70	752.15	763.20	767.75	774.25
LT	1474.70	1471.70	1460.20	1487.85	1499.35	1515.50
LUPIN	1580.50	1520.62	1496.83	1563.78	1587.57	1630.73
M&M	1421.60	1424.77	1400.38	1459.38	1483.77	1518.38
MARUTI	4878.65	4814.40	4767.20	4897.20	4944.40	5027.20
NTPC	159.55	155.90	153.90	158.75	160.75	163.60
ONGC	231.40	226.70	224.35	228.85	231.20	233.35
PNB	116.25	117.95	116.20	121.00	122.75	125.80
POWERGRID	174.05	173.17	171.93	174.83	176.07	177.73
RELIANCE	1014.10	992.25	980.85	1013.40	1024.80	1045.95
SBIN	227.15	229.40	227.30	233.15	235.25	239.00
SUNPHARMA	808.25	810.80	803.95	821.90	828.75	839.85
TATAMOTORS	503.25	498.33	493.22	507.42	512.53	521.62
TATAPOWER	74.65	73.10	72.20	74.50	75.40	76.80
TATASTEEL	368.35	365.83	361.37	372.62	377.08	383.87
TECHM	500.10	491.13	485.07	497.57	503.63	510.07
TCS	2709.90	2654.93	2634.47	2668.47	2688.93	2702.47
ULTRACEMCO	3706.65	3691.03	3653.12	3750.52	3788.43	3847.92
VEDL	161.40	161.70	158.95	164.55	167.30	170.15
WIPRO	543.00	538.13	533.62	544.57	549.08	555.52
YESBANK	1252.50	1252.72	1238.03	1262.28	1276.97	1286.53
ZEEL	501.50	509.43	503.87	513.62	519.18	523.37



## CORPORATE ACTION / BOARD MEETINGS

NSE Download Ref No :NSE/FAOP/32916:- Adjustment of Futures and Options contracts in the security HINDPETRO. The adjusted strike price shall be arrived at by dividing the old strike price by the adjustment factor i.e.3. The revised market lot would be 2100 w.e.f September 14, 2016

NSE Download Ref No. : NSE/CML/32942:- Face Value Split - PIL ITALICA LIFESTYLE LIMITED from Rs. 4 to Rs.1 w.e.f August 24, 2016

### BOARD MEETINGS

COMPANY NAME	DATE	PURPOSE	RS. PER SH.
L&TFH	12-Aug-16	Annual General Meeting/ Dividend	0.8
INDHOTEL	12-Aug-16	Annual General Meeting/ Dividend	0.3
GREENLAM	12-Aug-16	Annual General Meeting/ Dividend	1
HATSUN	12-Aug-16	Annual General Meeting/ Dividend	1
PNCINFRA	12-Aug-16	Face Value Split From Rs 10 To Rs 2	
SIEMENS	12-Aug-16	Dividend	27.5
KAJARIACER	12-Aug-16	Annual General Meeting/ Dividend	5
STERTOOLS	12-Aug-16	Dividend	5
VINYLINDIA	16-Aug-16	Annual General Meeting/ Dividend	1.5
KPRMILL	16-Aug-16	Annual General Meeting/ Dividend	1
SRF	16-Aug-16	Dividend	6
ABIRLANUVO	16-Aug-16	Dividend	5
TAKE	18-Aug-16	Annual General Meeting/ Dividend	0.4
WSTCSTPAPR	18-Aug-16	Annual General Meeting/ Dividend	1
LINCPEN	18-Aug-16	Annual General Meeting/ Dividend	3
JUBILANT	18-Aug-16	Annual General Meeting/ Dividend	3
LLOYDELENG	18-Aug-16	Annual General Meeting/ Dividend	1.3
LT	18-Aug-16	Dividend	18.25
SRIPIPES	18-Aug-16	Annual General Meeting/ Dividend	5
TRIDENT	18-Aug-16	Dividend	0.6
TRITURBINE	18-Aug-16	Dividend	0.45
AJMERA	18-Aug-16	Annual General Meeting/ Dividend	0.8

## NEWS & RUMOURS:

- Gold (Spot Dollar) major support = \$1321/\$1290 & Resistance = \$1371/\$1395.
- Crude oil range->\$36 to \$46.
- S&P 500 Rises as Europe Shares Approach Pre-Brexit on Earnings: - A batch of surprising earnings from Macy's Inc. to Zurich Insurance Group AG lifted global stocks, sending the S&P 500 Index toward a record as European shares came close to erasing the slide sparked by the U.K.'s secession vote. Oil climbed.
- Oil rises 3 percent as Saudi mulls meeting, IEA sees market tighten: - Oil prices rose over 3 percent on Thursday after comments from the Saudi oil minister about possible action to stabilize prices triggered a round of buying and the International Energy Agency forecast crude markets would tighten in the second half of 2016. Saudi Energy Minister Khalid al-Falih said OPEC members and non-members would discuss the market situation, including any action that may be required to stabilize prices, during an informal meeting on Sept. 26-28 in Algeria.
- U.S. natural gas futures slide to 2-month lows after storage data: - U.S. natural gas futures sank to a two-month low in North America trade on Thursday, after data showed that natural gas supplies in storage in the U.S. rose more than forecast last week.
- Gold holds steady in familiar range after jobless claims: - Gold prices were little changed in North American trade on Thursday, as weekly [U.S. jobless claims data](#) offered few clues on whether the Federal Reserve will raise interest rates in the coming months.
- The number of individuals filing for initial jobless benefits [decreased by 1,000 to 266,000](#) last week, the Labor Department said. Analysts had expected jobless claims to drop by 4,000 from the initial read to 265,000 last week.

## TRENDS & OUTLOOK – DATE: 12- Aug- 2016

### PRECIOUS METALS:

COMMDITY (MCX)	S2	S1	PIVOT POINT	R1	R2
GOLD (Oct)	30870	31100	31375	31630	31845
SILVER (Sep)	44400	45700	46900	48200	49345

### BASE METALS

COMMDITY (MCX)	S2	S1	PIVOT POINT	R1	R2
COPPER (Aug)	312	317	322	328	333
ZINC (Aug)	147.40	149.20	152.10	154.60	157.55
LEAD (Aug)	117.25	120.20	122.45	125.55	128.50
NICKEL (Aug)	691	707	718	736	752

### ENERGY

COMMDITY (MCX)	S2	S1	PIVOT POINT	R1	R2
CRUDE OIL (Aug)	2660	2750	2892	2997	3075
NATURAL GAS (Aug)	160	165	172	178	183

### DATA TALKS : TODAY'S ECONOMIC DATA :

Industrial Production y/y, Fixed Asset Investment y/y & Retail Sales y/y of China, German Prelim GDP q/q, Core Retail Sales m/m, PPI m/m, Retail Sales m/m, Core PPI m/m, CB Leading Index m/m, Prelim UoM Consumer Sentiment, Business Inventories m/m, Prelim UoM Inflation Expectations.





LET THE  
**WOMAN  
POWER RISE**

**WOMEN  
DESK**

All the Ladies in the house are  
cordially invited to come  
& explore their trading talents.

**TOLL FREE: 18001030059**





Registered Office

Indira House, 3rd Floor, 5 Topiwala Lane,  
Opp. Lemington Road Police Station, Grant Road (East), Mumbai - 400007.

Corporate Office

'Ramavat House' E-15, Saket Nagar, Indore - 452018 (M.P.)

Customer Care

Tel: +91-731-4097170/ 71/ 72/ 73/ 74 M. +91 93031 72345

Email: [customercare@indiratrade.com](mailto:customercare@indiratrade.com) [www.indiratrade.com](http://www.indiratrade.com)



INSTITUTIONAL DEALING UNIT

Africa House, 5, Topiwalla Lane, Lamington Road, Mumbai, 400007

Tel: +91 22 30080678 Fax : +91 22 23870767 Email : [ie@indiratrade.com](mailto:ie@indiratrade.com)

**Disclaimer**

This report is for private circulation within the Indira Group. This report is strictly confidential and for information of the selected recipient only and may not be altered in any way, transmitted to, copied or distributed, in part or in whole, to any other person or to the media or reproduced in any form. This report should not be construed as an offer or solicitation to buy or sell any securities or any interest in securities. It does not constitute a personal recommendation or take into account the particular investment objectives, financial situations, or any such factor. The information, opinions estimates and forecasts contained here have been obtained from, or are based upon, sources we believe to be reliable, but no representation of warranty, express or implied, is made by us to their accuracy or completeness. Opinions expressed are our current opinions as of the date appearing on this material only and are subject to change without notice.